

# KliniTray™

Tissue transfer and x-ray system

**Determine tumour sites with millimetre precision.**

KliniTray™ is a tissue transfer and X-ray system based on a non-radiopaque board with pre-attached radiopaque topographic markers. Side indicators and radiopaque frame provide exact discovery of the tumour within the tissue sample.



**daax**

The exclusive Faxitron distributor for the UK and Ireland

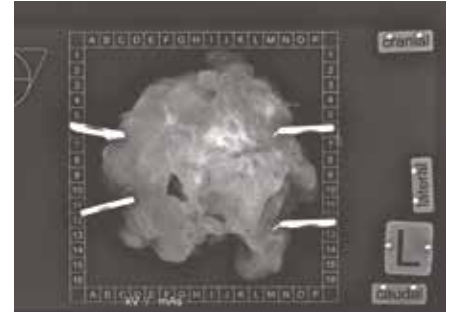
T +44 (0)370 979 9110 > E info@daax.co.uk > daax.co.uk

Daax Ltd, Unit 1A, The Cottage, 100 Royston Rd, Byfleet, Surrey KT14 7NY, United Kingdom

# KliniTray™



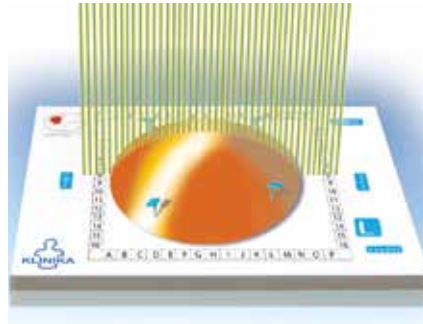
**KliniTray™ allows the surgeon to pin the tissue to the board, using specially designed safety pins, which secure the tissue in a defined 3D topographic position. Once pinned to the board, the tumour tissue remains stable and can be transported with ease.**



## Features & Benefits

### Easy tissue examination

KliniTray allows for tissue to be examined in a pre-determined 3D topographic position both radiologically and sonographically. Tissue can be measured millimetre precisely intra- and/or post-operatively. Special safety pins allow horizontal and vertical examination and clear lesion localization is possible with radiopaque markers orientation.



### Pre- attached radiopaque topographic markers and frame

Pre-attached topographic markers, 'cranial', 'caudal', 'lateral', 'medial' as well as 'L' and 'R' indicate which side of the patient's body the tissue has been removed from.

### Lightweight synthetic board material

Our product protects tumours during transport, in air and watertight containers, and guarantees secure examination and preparation. KliniTray includes a re-usable stand for cranio-caudal x-rays.

## Specifications

### KliniTray™ Mamma-boards - sterile and non-sterile

#### Product

KliniTray™ ("L"-board) - Small  
with 4 blue metal pins + 1 orange marker pin

KliniTray™ ("R"-board) - Small  
with 4 blue metal pins + 1 orange marker pin

KliniTray™ ("L"-board) - Large  
with 4 blue metal pins + 1 orange marker pin

KliniTray™ ("R"-board) - Large  
with 4 blue metal pins + 1 orange marker pin

#### Dimensions

9.5 x 16 x 1cm

9.5 x 16 x 1cm

18 x 20 x 1cm

18 x 20 x 1cm

### KliniTray™ Equipment

#### Product

Plastic Container - Small

Plastic Container - Large

Stand for KliniTray™ board

for vertical radiographs in the radiology

#### Volume

1000ml

3000ml